



MONTHLY MEMBERSHIP PROGRESS REPORT

District A 3

Results as of: 6/30/2015

GMT: TERRY GRAHAM

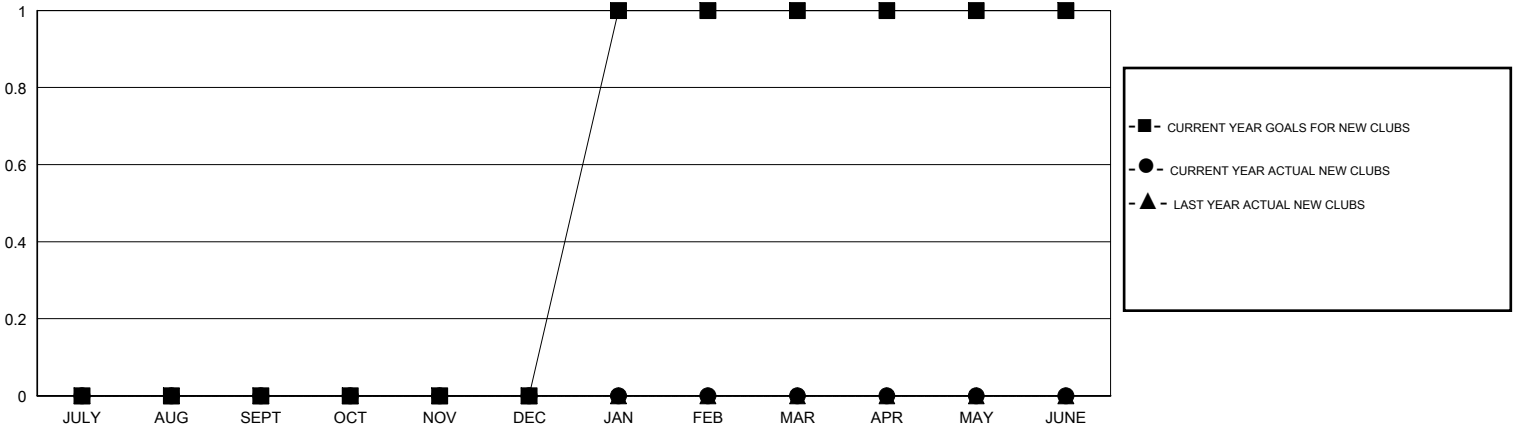
LOCATION ONTARIO

GMT CA 2

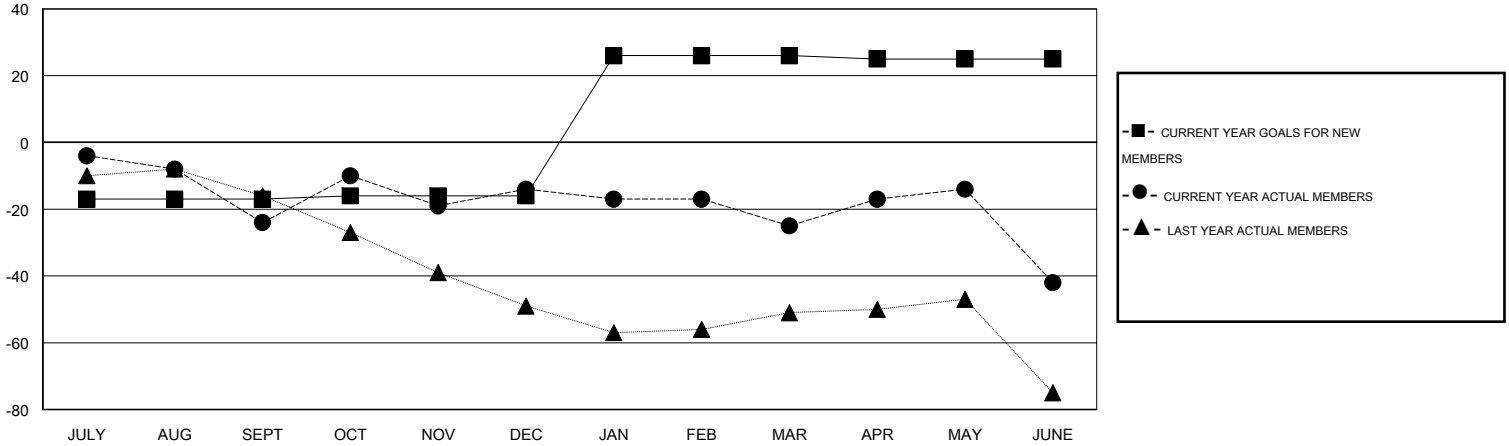
Clubs				
RESULTS FOR 2014-2015				
QUARTER	NEW CLUB GOAL	NEW CLUBS	DROPPED CLUBS	NET GAIN/LOSS
JULY/AUG/SEPT	0	0	0	0
OCT/NOV/DEC	0	0	0	0
JAN/FEB/MAR	1	0	0	0
APR/MAY/JUNE	0	0	1	-1

Members				
RESULTS FOR 2014-2015				
QUARTER	NEW MEMBER GOAL	CHARTER AND NEW MEMBERS ADDED	DROPPED MEMBERS	NET GAIN/LOSS
JULY/AUG/SEPT	-17	18	42	-24
OCT/NOV/DEC	1	52	42	10
JAN/FEB/MAR	42	26	37	-11
APR/MAY/JUNE	-1	37	54	-17

GOALS AND ACTUAL NEW CLUBS CUMULATIVE



GOALS AND ACTUAL MEMBERS CUMULATIVE



DROPPED CLUBS: 1	
------------------	--

36 CLUBS OF 52 ADDED 1 OR MORE NEW MEMBERS

GENDER DISTRIBUTION	
MALE	878 (65.09%)
FEMALE	471 (34.91%)

DROPPED MEMBERS	
DECEASED	15
CLUB CANCELLED	6
OTHER	154
TOTAL	175

[CLICK HERE FOR HEALTH ASSESSMENT DATA](#)

FAMILY UNIT MEMBERS	383
HEAD OF HOUSEHOLD	188
NON-HEAD OF HOUSEHOLD	195